



ITCare Silver



Do these issues plague your business?

- **Network Neglected?** Is IT perceived as a "necessary evil" and not as integral to improving business performance?
- **Downtime Impact?** Are IT outages distracting your staff from their core focus, or prohibiting them from working efficiently?
- **Distracted Employees?** Do your staff rely on other non-IT employees to deal with distracting IT problems?

Program Advantages:

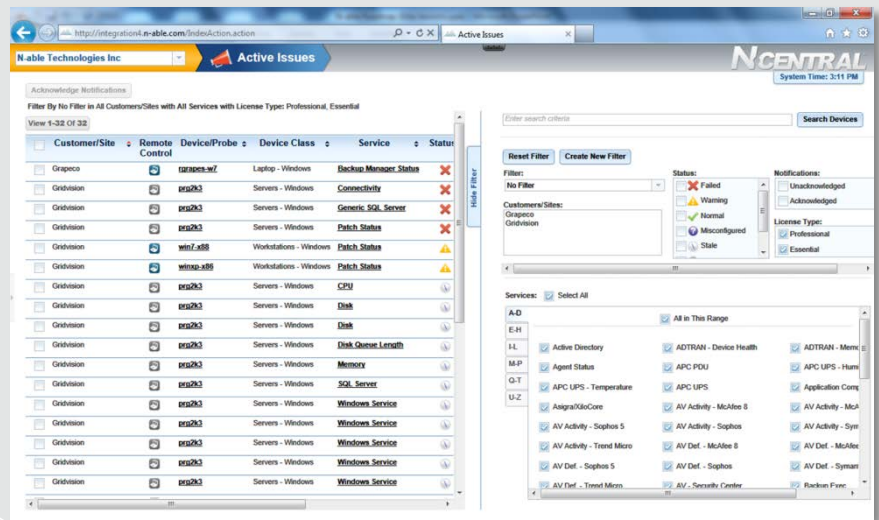
- **Increased Productivity:** Continuous insight into your network lets us reduce the business impact of IT failure by shortening the time from network failure to issue resolution.
- **Reduced Business Impact from IT Failures:** Combining preventative maintenance and remote monitoring means we minimize failures that could impact your business. Your network behaves in a stable and reliable manner.
- **Reduced Network Downtime Through Proactive Maintenance:** Through regular, preventative maintenance activities designed to keep your network operating efficiently, we reduce the number of emergency incidents you encounter.

"This program secures our company's network with real time monitoring and management which takes the stress and worry out of our technology needs."

– L. Bangson, Executive Director, IDP

A True Business Partnership

We understand why your critical business services are so important to your daily operations. This is why we spend so much time aligning our technology to support your initiatives. Building a program that relies on 24x7x365 network monitoring coupled with an aggressive preventative maintenance component ensures optimum uptime for your business.

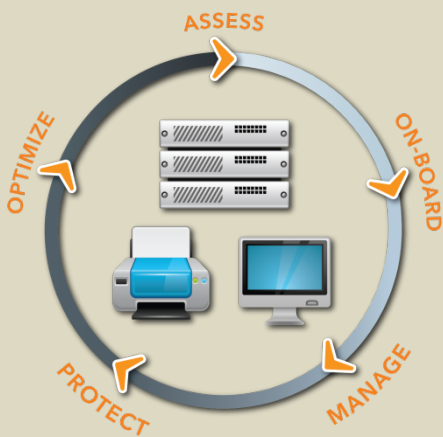


One of the major challenges in maintaining a computer network is trying to predict what will fail and when. With our ITCare Silver solution, we can prevent many network failures from ever happening. By combining regular and comprehensive preventative maintenance and robust real-time monitoring of your critical network and desktop devices, we ensure the reliability and stability of your IT assets.

This solution is so effective that our customers see almost immediate results. A regularly maintained network means fewer failures, yielding higher productivity and savings on support costs for you. At the same time, your exposure to security risks is dramatically lessened, and frustration from unstable IT resources almost vanishes. We allow our customers to focus on their core business functions by taking the worry out of owning a computer network.



Device Lifecycle Management



“Edgemate has utilized Real IT Care's services for over 10 years for all of our IT needs. Real IT Care is reliable, available, and trustworthy in everything they do. Their expertise in networking has helped our company grow. I would highly recommend Real IT Care to any prospective companies.”

– N. Benjamin, VP, Edgemate Products

www.realitcare.com
 info@realitcare.com
 570-323-2650

©2014 Real IT Care, LLC - All Rights Reserved.

Program Features

- **24x7 Advanced Performance Monitoring** ensures all of the critical network devices that comprise your small business network are healthy and functioning reliably and optimally
- **Scheduled Preventative Maintenance** ensures that your servers, PCs and other vital network devices function optimally. This improves reliability and security
- **Quarterly Network Health Review** dedicates time to review reports and issues that are important to the ongoing performance of your network. We translate technology into business terms for you
- **Security Management** uses properly designed and implemented Anti-Virus and Anti-Spam solutions to keep your business protected
- **Patch Management** ensures all of your Windows servers and PCs have the most up-to-date security and system patches, helping to optimize performance and minimize security risk
- **Network Operations Center:** Our NOC team is available to assist with all your support needs, delivering support remotely and actively monitoring your systems for critical failure

Program Elements	Included Services
Proactive Server	<ul style="list-style-type: none"> • 24x7 Advanced Performance Monitoring • Key Application Maintenance • Microsoft Patch Management (3rd Party optional) • Scheduled Preventative Maintenance
Proactive Workstation	<ul style="list-style-type: none"> • Microsoft Patch Management (3rd Party optional) • Scheduled Preventative Maintenance • Availability Monitoring
Proactive Backup	<ul style="list-style-type: none"> • Backup Deployment, Configuration, and Verification • Backup Performance Monitoring • Backup Software Updates • Scheduled Backup Jobs
Proactive Support	<ul style="list-style-type: none"> • Quarterly Network Health Review • Additional Network, End-user and Network Support Billed at discounted T&M Rates
Proactive Security	<ul style="list-style-type: none"> • Anti-Virus Monitoring and Management • Anti-Spam Monitoring and Management
Proactive Network	<ul style="list-style-type: none"> • Router/Switch Performance Monitoring

Stop the Break/Fix Hamster Wheel – Invest in Uptime

Call Today for a Custom Quote